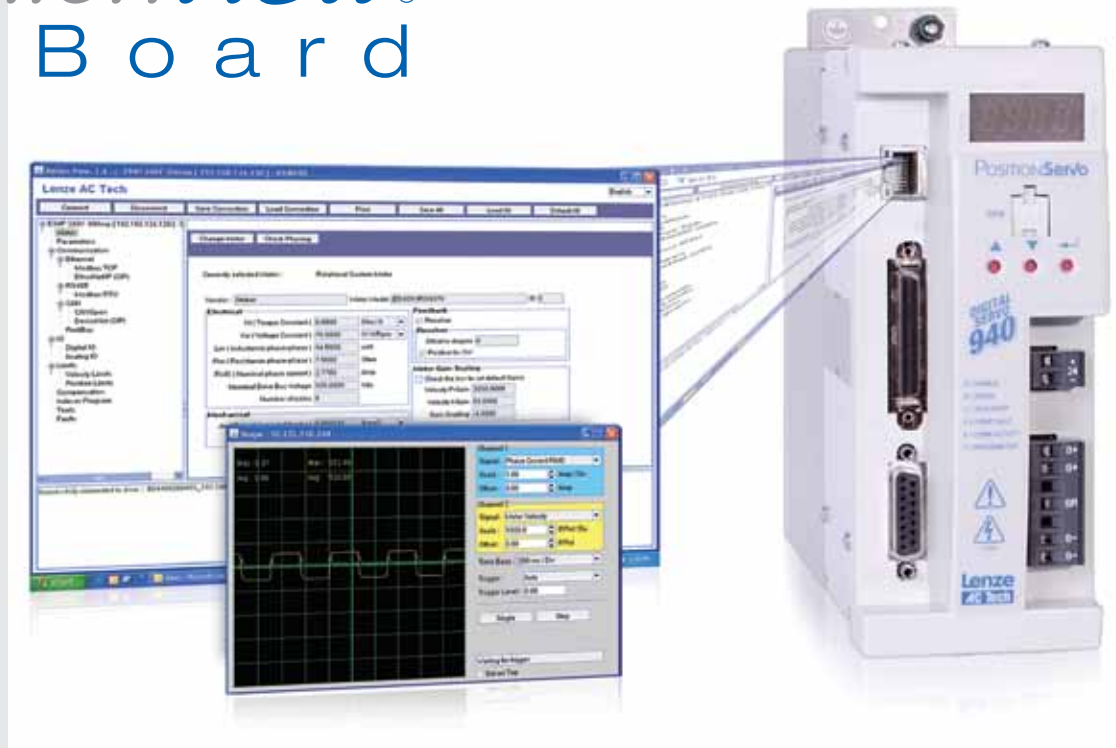


# Get OnBoard.

The PositionServo with MotionView OnBoard - an embedded set-up, programming and diagnostic software tool that can be launched over Ethernet using any web browser.

## MotionView<sup>®</sup> OnBoard



### You need

- to have your servo up and running immediately
- to eliminate the need for activation codes or servo software discs
- to not worry over the drive's latest software and firmware revisions

### You want

- to design equipment that beats the competition
- to build machines that perform efficiently, are user-friendly and profitable to operate
- to have all that for **FREE**

## You get all that - and more.

The PositionServo with MotionView OnBoard from Lenze Americas

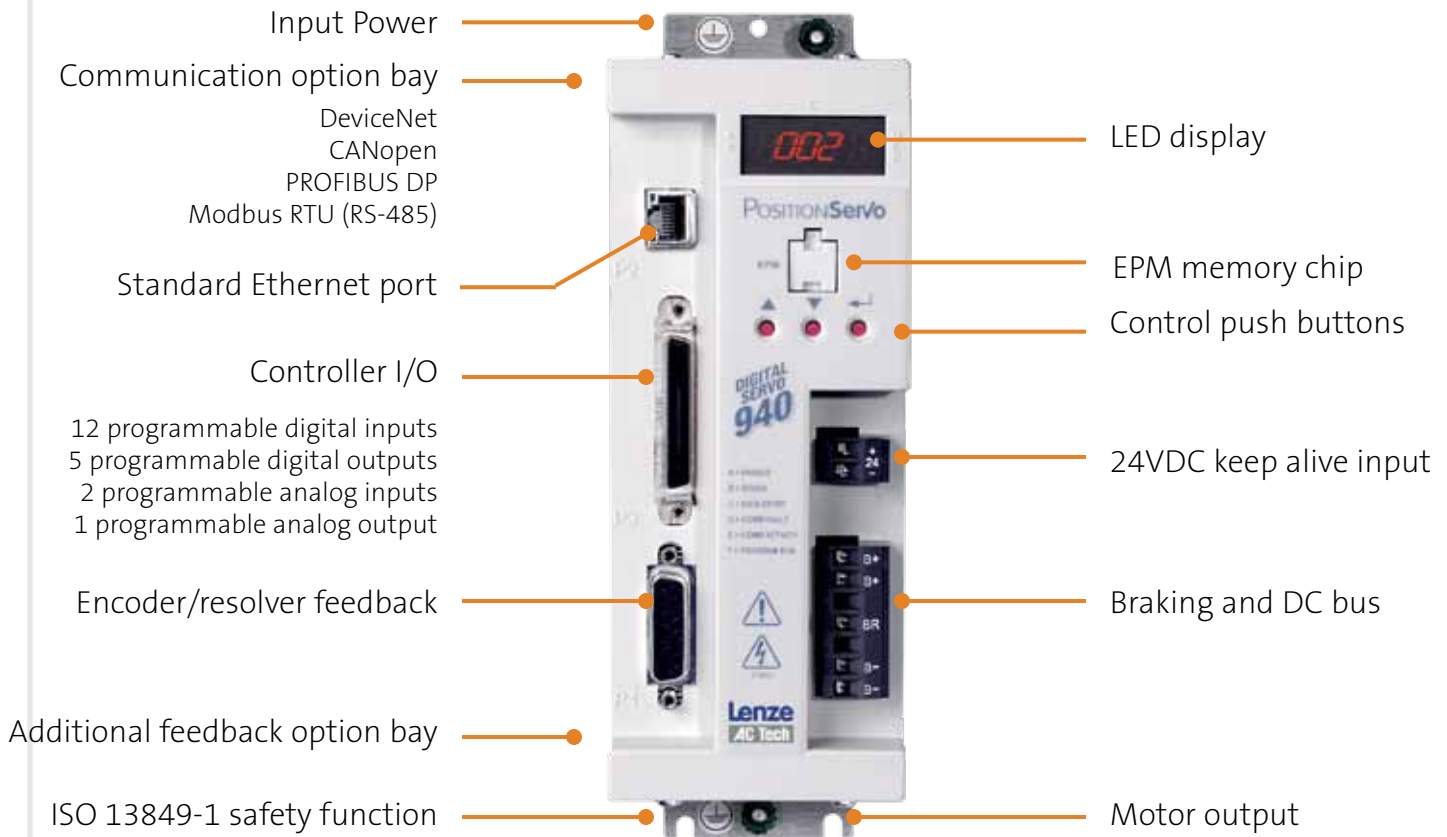


Manage your motion,  
control your results.

**Lenze**

# Get connected.

There's no stopping you now, thanks to the PositionServo with MotionView OnBoard.



Features	Benefits
Instant drive set-up	Through the MotionView software tool, now OnBoard!
EPM memory chip	Set up, program and duplicate drive parameters in seconds
Any level of control	Use <i>one</i> drive - for applications from basic torque/velocity through complex positioning
Standard Ethernet	Get clean and efficient communication solutions via Modbus TCP/IP and Ethernet/IP
High-speed bus communication	Speak the right language via DeviceNet, PROFIBUS and CANopen modules
Digital and analog I/O	Get just the I/O you need to interface the PositionServo into your application
Pre-configured servo cabling	Connect quickly for plug-and-play operation
Compact dimensions	Minimize cabinet space, saving money and valuable real estate
Universal power ranges	Choose 80-264 VAC input, up to 18A <sub>RMS</sub> output <i>or</i> 80-538 VAC input, up to 9A <sub>RMS</sub> output
Extensive motor library	Select from hundreds of motors, click and go!
ISO 13849-1 safety standard	Eliminate the need for an additional external safety circuit

**Its easy.** Call your distributor or contact Lenze Americas. Once you start using the effortless, elegant new version of the PositionServo with MotionView OnBoard, you'll never go back to traditional motion control.

