

PLC Designer



PLC

PLC Designer

Contents



General information

Product information

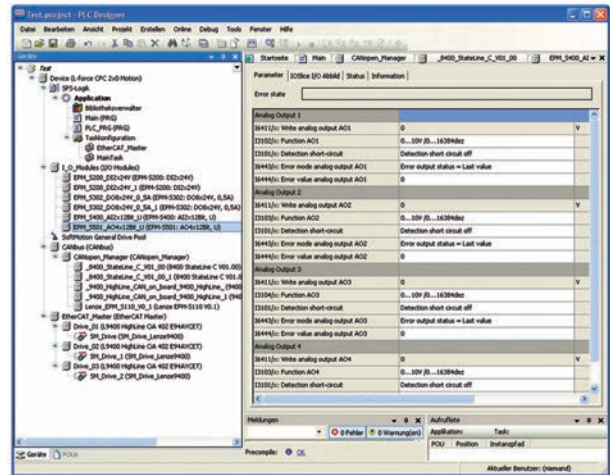
7.5 - 4



Product information

Control in line with the IEC 61131-3 industry standard

The control is based on the modern CoDeSys control system 3. Lenze qualified this basic system for continuous operation in automation systems and then extended and modified it to meet its requirements. It is marketed under the name PLC Designer 3. Compared to the pure CoDeSys system, the timing has for example been optimised and adapted to the specific hardware in a way that guarantees optimised packing density for best possible utilisation of bus performance. In addition to this, the system has been extended to include a gateway function, which grants drive parameter setting programs such as L-force Engineer access through the controller to the connected field devices – a particularly useful system extension for EtherCAT®. However, the most important addition is integration of the I/O system 1000 in the control configuration.



The PLC Designer is offered in 4 different licence levels, although all licence levels have one thing in common:

The L-force Engineer and PLC Designer share one common licence. Any customers ordering one of the two products will therefore automatically also receive a license for the other product. The license key, which is required for installation of the software, is the same for both products.

Every L-force controller is also supplied with a CD which, among other things, includes the PLC Designer. This version is a demo version which can be used for 30 days. The full version can then be activated by simply entering an engineer key. New versions of the PLC Designer and updates are available for download on the Internet.

Mode	Features	Product key
PLC Designer 3.x		
Single user licence	<ul style="list-style-type: none"> CD-ROM not included in scope of supply Installation on one PC Languages: German and English 	ESPEVPDXA0EC1
Multiple user licence	<ul style="list-style-type: none"> CD-ROM not included in scope of supply Multiple installations on the number of machines for which licences have been purchased The basis is a single user licence 	ESPEVPDNNMML1
Corporate licence	<ul style="list-style-type: none"> CD-ROM not included in scope of supply Multiple installations within a company at one location The basis is a single user licence 	ESPEVPDNNNFL1
Buyout licence	<ul style="list-style-type: none"> CD-ROM not included in scope of supply Issuing of sublicences in conjunction with Lenze drives installed in a machine The basis is a single user licence 	ESPEVPDNNNBL1

PLC Designer

General information



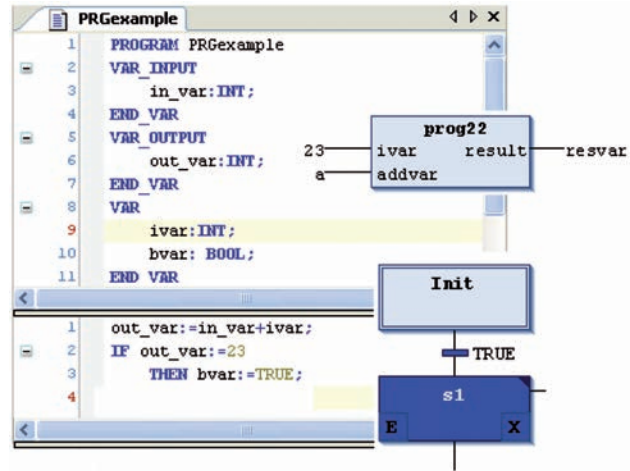
Product information

PLC Designer

Lenze uses the PLC Designer as the central engineering software for control technology. It is based on the familiar CoDeSys system and offers the following features:

- Programming of Logic & Motion in line with IEC 61131-3 (IL, LD, FP, ST, SFC and CFC Editor)
- Certified function blocks in line with PLCopen Part 1 + 2
- NC block library
- Graphic DIN 66025 Editor (G-Code) with DXF import
- Cam editor
- Object-oriented programming

For programming the L-force Controller 3200 C, Version 3 of the PLC Designer is required.



Web-based parameter setting

All L-force Controllers have an integrated web server with prepared pages for the following actions:

- Controller configuration and diagnostics
- Access to all logbook parameters
- Access to integrated controller logbook

This allows all key commissioning and diagnostic work to be performed without a separate PC application. A web browser is all that is needed.



Backup & Restore

Backup & Restore is a free of charge application that you can use to easily backup your controller:

- Perform backups
- Perform restores
- Perform updates

Backup & Restore is included on the CD that is supplied with every L-force Controller. Suitable USB flash drives can also be found under accessories.

